



**PDN presents**



**October 22nd – 23rd, 2018 - Herz-Jesu-Kloster, Neustadt**





## Welcome



Dear participants,

It is a great pleasure for us to warmly welcome you to the DKFZ PostDoc Network Retreat 2018.

The focus of this year's retreat will be on scientific presentations by the PostDocs themselves. We encourage you to use this opportunity to exchange your scientific ideas and to expand your professional network. In addition, Angela Wagner will give a workshop on how to deal with stress and the Career Service, the PostDoc Program and the Diversity Officer from DKFZ will be present to answer any burning questions about career pathways and beyond.

The DKFZ PostDoc Network Retreat has developed over the years into an excellent networking platform helping participants to shape their future careers. We highly appreciate the engagement of our PostDocs and would like to use this opportunity to thank you for your commitment.

We wish all participants a successful retreat!

Sincerely,

A handwritten signature in blue ink, appearing to read 'M. Baumann'.

Prof. Dr. Michael Baumann

A handwritten signature in blue ink, appearing to read 'J. Puchta'.

Prof. Dr. Josef Puchta

## DKFZ PostDoc Retreat 2018

Dear Postdocs,

We would like to welcome you to the 7th DKFZ PostDoc Retreat. The retreats were initiated to give the broad spectrum of DKFZ Postdocs a forum to interact, network and present their recent advancements in cutting edge research.

We are looking forward to a very exciting scientific and social program. Besides the scientific presentations we would like to address a special issue that every Postdoc has to face. We are pleased to welcome our guest speaker Angela Wagner. In an interactive workshop she will give you an insight how to deal with stress. In addition, Sabine Schuler-Hofmann from the DKFZ Career Service and Philipp Gebhardt from the DKFZ PostDoc program will be available to talk about PostDoc career advice.

We, the PostDoc Network (PDN), hope you enjoy the Retreat.

The scientific and personal diversity of the postdoctoral community encountered at the DKFZ required the establishment of a unifying platform that efficiently represents the interests and needs of postdocs. The PDN is continually aiming to maintain and grow a vibrant postdoctoral experience at the DKFZ. Several subgroups have been established to provide the optimal infrastructure to achieve our goals:

### **Visibility ● Career Development ● Networking**

The PDN Committee is meeting on a regular basis every second Tuesday at 5.00pm in the seminar room H1.00.028. You could get many personal benefits out of an active participation in the life of the PDN, so don't hesitate to bring in your own ideas, contact us at [pdn@dkfz.de](mailto:pdn@dkfz.de) and join us!

The PDN wishes you a successful Retreat and hopes to see you at the up-coming PDN events.

Best Regards,

The PDN Team

The PDN is:

Barbara Costa

Deblina Chakraborty

Carla Galmozzi

Juliane Hafermann

Dominic Edelmann

Doris Schneller

Lea Schroeder

Lionel Larribère

Mike Fletcher

Nádia Correia

Neda Yahoo

Stefan Kallenberger



The PDN Committee 2018



# Table of contents

Program.....	8
Guest Speakers' Portraits.....	10
Oral Presentations.....	18
Poster Presentations.....	31
List of Participants.....	49

## Program - Monday, 22/10/2018

**10:00 Registration**

**10:10 Welcome**

**10:40 First scientific session (4 talks)**

Brandan Pedre

Alicia Roig Merino

Christos Patsis

Simona Capponi

**11:40 Equal opportunities and diversity: is equality possible with implicit bias?**

**12:00 Lunch**

**13:30 Workshop session 1 (Career Guidance)**

**15:00 Poster session 1 (including Coffee break) (8 posters)**

**16:30 Second scientific session (3 talks)**

Angela Riedel-Lichorowicz

Manuel Rodríguez-Paredes

Jacob Insua-Rodríguez

**17:30 Update from the DKFZ Postdoc Program Manager**

**18:00 Dinner**

**19:30 Social Event**

**21:30 Get-together**



## Program - Tuesday, 23/10/2018

**08:00 Breakfast**

**09:15 Third scientific session (4 talks)**

Carine Legrand

Ruzhica Bogeska

Pauline Latzer

Zhiqin Huang

**10:15 Poster session 2 (including Coffee break) (8 posters)**

**12:00 Lunch**

**13:00 Workshop session 2 (Dealing with stress)**

**15:30 Coffee break**

**16:00 Closing remarks, prize ceremony and departure**

## Guest Speaker's Portraits



## Sophia Angela Wagner

Sophia Angela Wagner studied philosophy, ethnology and psychology at the University of Heidelberg. She is self-employed and organizes workshops, moderates at conferences and seminars, offers coaching both to leaders and teams and teaches psychology.

Her workshop about how to handle stress includes:



# Postdoc Program

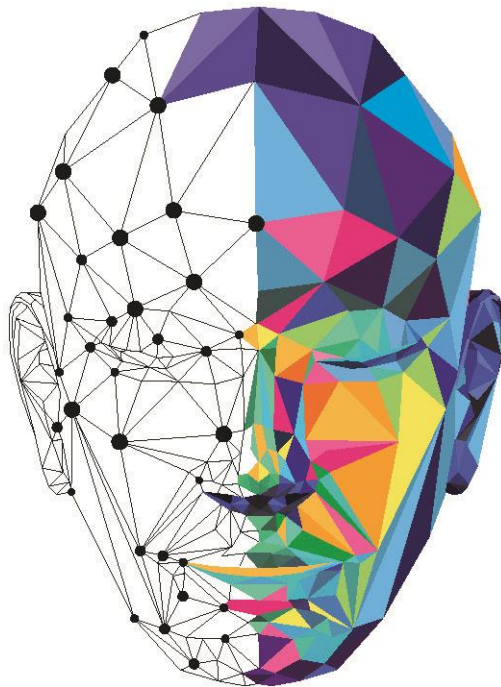
**dkfz.**

GERMAN  
CANCER RESEARCH CENTER  
IN THE HELMHOLTZ ASSOCIATION

## CONNECTING THE DOTS.

RESEARCH FOR A LIFE WITHOUT CANCER  
International Postdoc Program

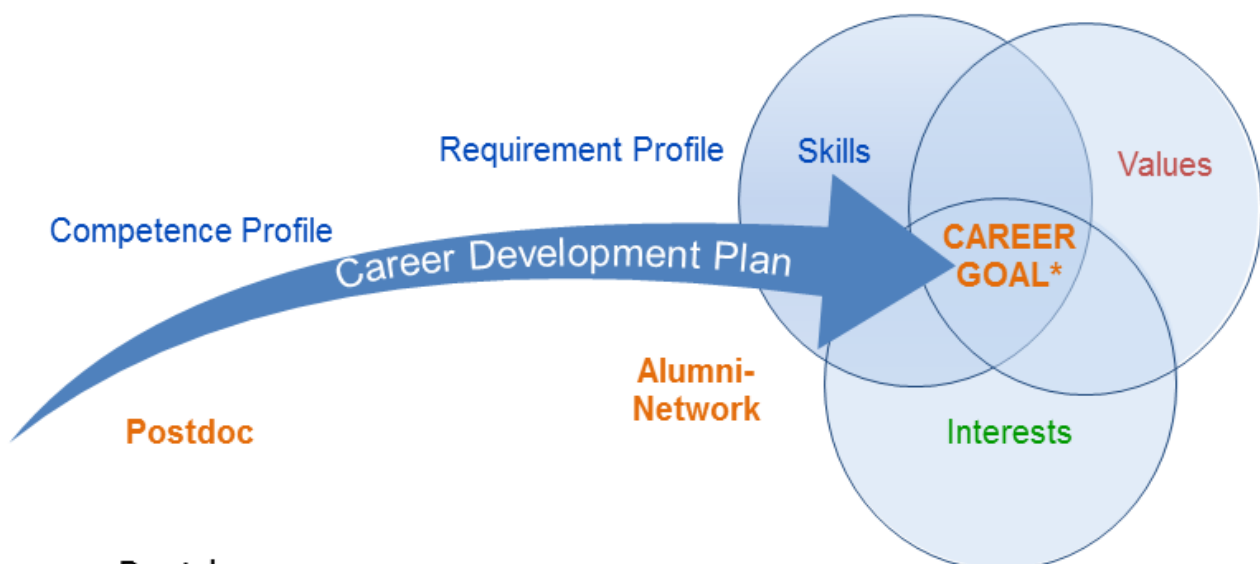
Postdoc Program



## Career Service

### Helmholtz Career Development Center for Researchers

We help you take informed decisions



- Postdoc **surveys**
- Individual and goal-oriented **competence development**
- Competence Assessment **software** for staff development
- Structured **mentoring**
- Follow-up with **Alumni**

\*Career Tracks based on Alumni records:

Academic Research, Clinical Research, Communication & Teaching,  
Entrepreneurship & Technology Transfer, Project & Science Management  
and Research in Industry (R&D)

# DKFZ Career Center for Postdocs

Scientific Life beyond the lab

[www.dkfz.de/careers](http://www.dkfz.de/careers)

## Career Guidance

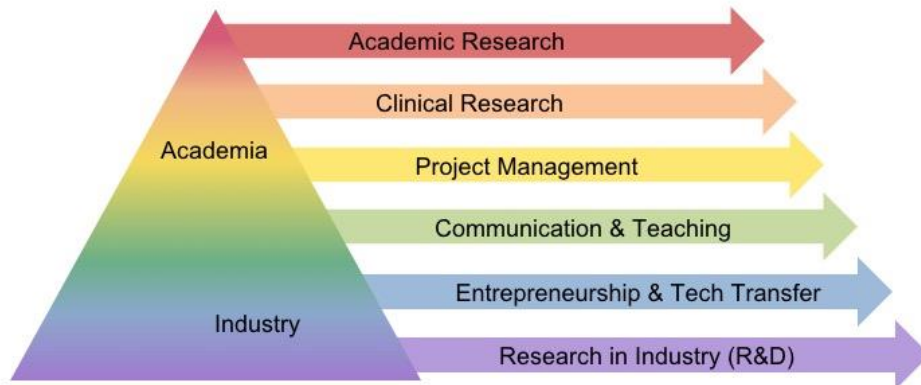
- CDP Career Development Perspectives
- CTP Career Transition Plan and Guidance (CV and Cover Letter review, interview etc.)
- Personal appointments

## Career Information & Training

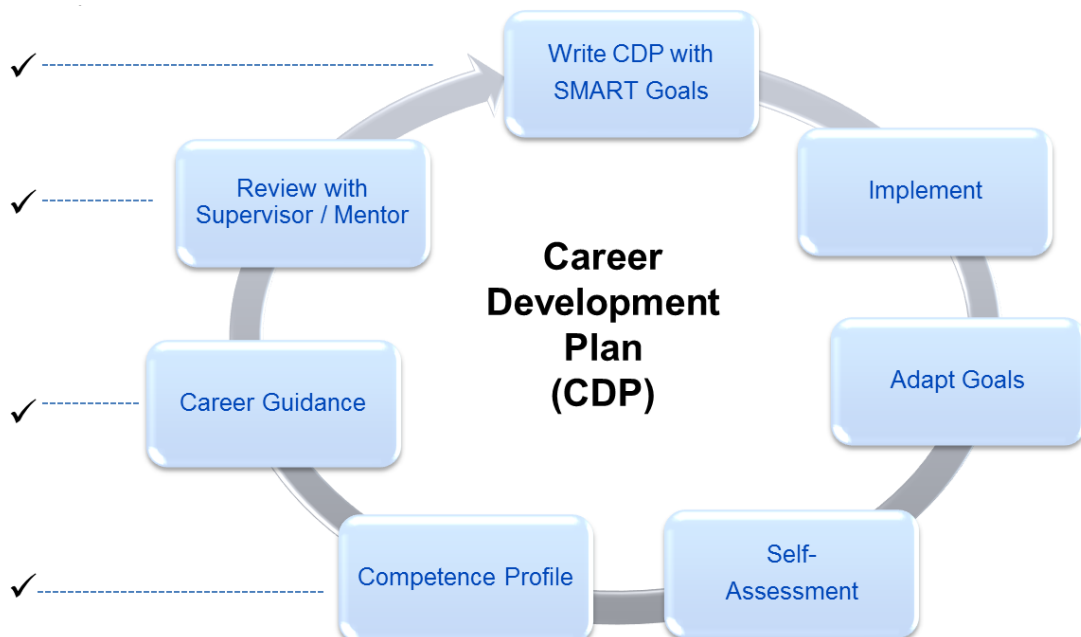
- Career Days, Career Coffee/Lunch, Info talks...
- Trainings (Job Applications/Interviews, Business Skills, Project Management ...)

## Career Network

- Platform: [dkfz-connect.de](http://dkfz-connect.de) for current and former postdocs
- Group: [linkedin.com/groups/DKFZ-Career-Network-4831669](https://www.linkedin.com/groups/DKFZ-Career-Network-4831669)
- Page: [facebook.com/dkfzcareers](https://www.facebook.com/dkfzcareers)



### A planned approach to getting there:



## DKFZ Career Center for Postdocs

### Scientific Life beyond the lab

Make an appointment: [careers@dkfz-heidelberg.de](mailto:careers@dkfz-heidelberg.de)

DKFZ Researchers can make an appointment with a Careers Advisor for a personal and confidential chat.

### Free slots from January 2019!

Career Development Plan	Follow-up	
<p><b>Competence Assessment CDP Review</b></p> <p><b>Barbara Janssens</b> <b>Sabine Schuler-Hofmann</b> <i>Tel 3402</i></p> <p>Careers Advisor since Nov 2017. She studied Social Sciences/Business and was working with Pharma in Asia &amp; Europe as HR Consultant conducting Assessment/Development Centers.</p>	<p><b>CV Review/Job applications etc.</b></p> <p><b>Marion Gürth</b> <i>Tel 1762</i></p> <p>Careers Advisor since Jan 2016 and Project Coordinator since 2013. She studied Biology in Darmstadt and Heidelberg and was working at the institute of pathology in Heidelberg and as a freelancer before.</p>	<p><b>Academia, Mentoring, Dual Careers etc.</b></p> <p><b>Dr. Karin Greulich-Bode</b> <i>Tel 3403</i></p> <p>Careers Advisor since April 2017. She studied human biology and was working in cancer research in the US and DE. Before she joined the Career Service she had been equal opportunities officer at DKFZ for eight years.</p>
		
	<p style="text-align: center;"><b>Career Manager: Dr. Barbara Janssens</b> <i>Tel 2146</i></p> <p>Careers Advisor and Manager since 2011. She is Belgian (PhD in molecular and cell biology from Ghent University), and after a postdoc in Paris she worked for five years as an Editor at Wiley-Blackwell.</p>	

## DKFZ PostDoc Retreat 2018

For postdocs planning a career in science DKFZ specifically offers the course

### “Taking the next steps: A career toolkit for postdocs”

on **October 29-30, 2018**. Please register via the training portal soon if you would like to participate. This workshop is specifically designed for Postdocs at DKFZ and DKTK who want to advance their academic portfolio and scientific career.

It is based on four fundamentals:

- **Identify your unique selling point:** Elevator pitch, graphical abstract, word your central message, identify your vision
- **Make plans and adapt them:** Structured problem solving, SMART goals for your career: skills, values, interests, “Plans are nothing, planning is everything”: writing it down is the first step to making it happen, personal career development, plan A & B, my individual development plan ([myidp.sciencecareers.org](http://myidp.sciencecareers.org))
- **Get information across:** Feedback as leadership tool, sending and receiving, active listening, 4 laws of scientific communication, primacy, recency and surprise effect, repetition
- **Understand people, motivate and lead them:** Group dynamics, communication and negative listening behaviours, common leadership principles (delegating vs hands-on, trust), motivation

Success of advanced training is dependent on the content, the method and the trainers. This workshop has two unique advantages: it is given by scientists for scientists ([www.scientistsneedmore.de](http://www.scientistsneedmore.de)). One of the trainers is a “Certified Facilitator” of the “Thiagi Concept”. The workshop program consists of a balanced and structured set of activities and review sessions that provide directly applicable tools for everyday lab situations and long-term success in science.

To participate, you are required to register in the DKFZ Training Portal and upload a concise statement of motivation. In 5-10 sentences: Please tell us how long you have been a postdoc, what your future goals are and how do you think you would benefit from the workshop.

Find below **quotes of former participants** who have taken this course (previously called “Leadership in Science”):

*“I have never attended before such an inspiring course, and this is not at all exaggerated! The trainers were so enthusiastic, creating a familiar and pleasant atmosphere with just the right number of participants. It was astonishing how learning content was imparted in such a lively way by the prepared interactive mini-games. This valuable experience will help me developing my own career with all its aspects. Moreover, I had the chance to get to know other people and even more initiate a new scientific collaboration.” (Postdoc at DKFZ)*

*“The course was comprehensive, efficient, and fun! I particularly liked situative leadership aspects and the personal development plan IDP. This will help me a lot in management situations and in negotiating my next career goals. I liked the format which integrates a lot of interaction and group work in representative situations, along with milestone slides as a support.” (Postdoc at DKFZ)*

*“Lively and interactive course, real life examples, readily transferable to own situation, tips for career planning (most importantly: have a written GOAL and a plan B and check whether you achieved your goals in real time), great tips for communication and feedback!” (Postdoc at DKFZ)*



Welcome to DKFZ Connect

JOIN NOW

Connect with

 LinkedIn

 Facebook

Email

Why is it safe to register with LinkedIn / Facebook?

[www.dkfz-connect.de](http://www.dkfz-connect.de)

- DKFZ current & former
- Career profiles
- Mentoring
- Jobs
- Events
- News

Contact:

DKFZ Career Service  
Phone +49 6221 42 2146  
careers@dkfz.de



Deutsches Krebsforschungszentrum (DKFZ) | Im Neuenheimer Feld 280 | 69120 Heidelberg

**Oral Presentations**

## Oral Presentations Overview

### **First scientific session - Monday, 10:40**

Brandan Pedre

Alicia Roig Merino

Christos Patsis

Simona Capponi

### **Second scientific session - Monday 16:30**

Angela Riedel-Lichorowicz

Manuel Rodríguez-Paredes

Jacob Insua-Rodríguez

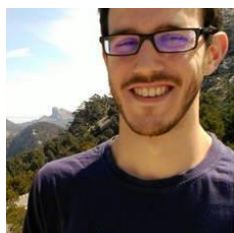
### **Third scientific session - Tuesday 09:15**

Carine Legrand

Ruzhica Bogeska

Pauline Latzer

Zhiqin Huang



**Brandon Pedre**

**MST-roGFP2: a potential genetically encoded probe for monitoring 3-mercaptopyruvate production**

Pedre Brandon



## Alicia Roig Merino

### **A novel non-integrative and autonomously replicating DNA vector system for the persistent genetic modification of stem cells and transgenesis**

Alicia Roig-Merino (1); Matthias Bozza (1); Louise Bullen (2); Marleen Büchler (3); Sina Stäble (3); Franciscus van der Hoeven (4); James Williams (5); Clague Hodgson (5); Tristan Mckay (2); Michael Milsom (3); Richard Harbottle (1)

(1) DNA Vector Lab, DKFZ, Heidelberg, Germany; (2) Manchester Metropolitan University (MMU), Manchester, UK; (3) HiSTEM/DKFZ, Heidelberg, Germany; (4) Transgenics Core Facility, DKFZ, Heidelberg, Germany, (5) Nature Technology Corporation, Lincoln, Nebraska, US



Christos Patsis

**Therapeutic exploitation of passenger amplifications in hepatocellular carcinoma**

Christos Patsis (1, 2), Joan Crous I Masó (1,2), Ilaria Salvato (1,2), Luise Butthof (1,2), Rossella Pellegrino (2), Diana Lutz (2), Matthias Gaida (2), Petros Christopoulos (3), Darjus Tschaharganeh (1,2)

(1) Helmholtz-University Group "Cell Plasticity and Epigenetic Remodeling", F190, German Cancer Research Center (DKFZ), Heidelberg, Germany; (2) Institute of Pathology University Hospital, Heidelberg, Germany; (3) Department of Thoracic Oncology, Thoraxklinik University Hospital / Translational Lung Research Center Heidelberg (TLRC-H), Heidelberg, Germany

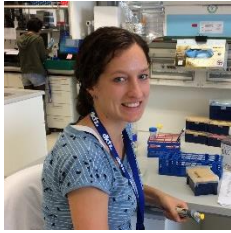


## Simona Capponi

### **SRRM4 directs TAF1 alternative splicing and shapes neuron-specific TFIID**

Simona Capponi (\*,1,2), Frederik M.A. van Schaik (2), Manuel Irimia (3,4), Mercedes M. Ondik (5), Martin L. Binossek (6), Marit W. Vermunt (7), Menno P. Creyghton (7), Ann M. Graybiel (5), Oliver Schilling (6,8,9), Benjamin J. Blencowe (10), Jill R. Crittenden (5), H. Th. Marc Timmers (1,2)

(1) German Cancer Consortium (DKTK) partner site Freiburg, German Cancer Research Center (DKFZ) and Department of Urology, Medical Center-University of Freiburg, Freiburg, Germany; (2) Molecular Cancer Research and Stem Cells, Regenerative Medicine Center and Center for Molecular Medicine, University Medical Center Utrecht, Utrecht, The Netherlands; (3) EMBL/CRG Systems Biology Research Unit, Centre for Genomic Regulation (CRG), The Barcelona Institute for Science and Technology, Barcelona, Spain; (4) Universitat Pompeu Fabra (UPF), Barcelona, Spain; (5) McGovern Institute for Brain Research, Department of Brain and Cognitive Sciences, Massachusetts Institute of Technology, Cambridge, Massachusetts, United States of America; (6) Institute of Molecular Medicine and Cell Research, Faculty of Medicine, University of Freiburg, Freiburg, Germany; (7) Hubrecht Institute-KNAW and University Medical Center Utrecht, Utrecht, The Netherlands; (8) German Cancer Consortium (DKTK) partner site Freiburg and German Cancer Research Center (DKFZ), University of Freiburg, Freiburg, Germany; (9) BIOSS Centre for Biological Signaling Studies, University of Freiburg, Freiburg, Germany; (10) Donnelly Centre, University of Toronto, Toronto, Ontario M5S 3E1, Canada;



## Angela Riedel-Lichorowicz

### **Tumor-derived lactic acid drives stromal changes in the draining lymph node niche**

Angela Riedel (1,2,3), Jonathan Swietlik (1), David Shorthouse (1), Lisa Haas (1), Tim Young (1), Sofia Costa (1), Sarah Davidson (1), Luisa Pedro (1), Benjamin A Hall (1), Thordur Oskarsson (2,3), Christian Frezza (1), Jacqueline Shields (1)

(1) MRC Cancer Unit, University of Cambridge, Hutchison/MRC Research Centre, Cambridge, United Kingdom; (2) Heidelberg Institute for Stem Cell Technology and Experimental Medicine (HI-STEM gGmbH), Heidelberg, Germany; (3) Cell Biology and Tumor Biology Program, German Cancer Research Center (DKFZ), Heidelberg, Germany





## Manuel Rodríguez-Paredes

### **Characterization of human dermal fibroblasts using single cell RNA sequencing (sc-RNAseq)**

Manuel Rodríguez-Paredes (1), Llorenç Solé-Boldo (1), Günter Raddatz (1), Katharina Röck (2), Jan-Philipp Mallm (3), Marc Winnefeld (2), Karsten Rippe (3), Anke Lonsdorf (4) & Frank Lyko (1)

(1) Division of Epigenetics, DKFZ-ZMBH Alliance, German Cancer Research Center, Heidelberg, Germany; (2) Research & Development, Beiersdorf AG, Hamburg, Germany; (3) German Cancer Research Center and Bioquant, Heidelberg, Germany; (4) Department of Dermatology, Heidelberg University Hospital, Heidelberg, Germany



## Jacob Insua-Rodríguez

### **Stress signaling in breast cancer cells induces niche extracellular matrix proteins that promote chemoresistant metastasis**

Jacob Insua-Rodríguez (1,2,3), Maren Pein (1,2,3), Tsunaki Hongu (1,2,4), Jasmin Meier (1,2), Arnaud Descot (1,2), Camille M. Lowy (1,2,3), Etienne De Braekeleer (1,2), Hans-Peter Sinn (5), Saskia Spaich (6), Marc Sütterlin (6), Andreas Schneeweiss (7,8) and Thordur Oskarsson (1,2,9)

(1) Heidelberg Institute for Stem Cell Technology and Experimental Medicine (HI-STEM gGmbH), Im Neuenheimer Feld 280, 69120 Heidelberg, Germany; (2) Cell Biology and Tumor Biology Program, German Cancer Research Center (DKFZ), Im Neuenheimer Feld 280, 69120 Heidelberg, Germany; (3) Biosciences Faculty, University of Heidelberg, Im Neuenheimer Feld 234, 69120 Heidelberg, Germany; (4) Department of Physiological Chemistry and Department of Environmental Biology, Faculty of Medicine, University of Tsukuba, 1-1-1 Tennodai, 305-8575 Tsukuba, Japan; (5) Institute of Pathology, University of Heidelberg, Im Neuenheimer Feld 224, 69120, Heidelberg, Germany; (6) Department of Obstetrics and Gynaecology, University Medical Centre Mannheim, Heidelberg University, Theodor-Kutzer-Ufer 1-3, 68167, Mannheim, Germany; (7) National Center for Tumor Diseases – NCT, Im Neuenheimer Feld 460, 69120 Heidelberg, Germany; (8) Department of Obstetrics and Gynecology, University of Heidelberg, Im Neuenheimer Feld 440, 69120 Heidelberg, Germany; (9) German Cancer Consortium (DKTK), 69120 Heidelberg, Germany



## Carine Legrand

**RiboVIEW: a computational framework for quality control and statistical analysis of ribosome profiling data**

Carine Legrand, Francesca Tuorto and Frank Lyko

Division of Epigenetics, DKFZ-ZMBH Alliance, German Cancer Research Center, Heidelberg, Germany

## Ruzhica Bogeska

### **Restricted regeneration of hematopoietic stem cell following chronic inflammatory stress leads to hematopoietic tissue failure during ageing**

Ruzhica Bogeska (1), Paul Kaschutnig (1), Stella Paffenholz (1), Julia Maassen (2), Dagmar Walter (2), Jan-Philipp Mallm (3), Florian Buettner (6), Felix Frauhammer (3,4), Blazskiewicz Sandra (2), Tim Holland-Letz (3), Noboru Asada (5), Julius Graesel (1), Sina Staebler (3), Áine M. Prendergast (2,3), Simon Haas (2,3), Daniel B Lipka (3), Karsten Rippe (3), Benedikt Brors (3), Paul S. Frenette (5), Marieke A. G. Essers (2,3) and Michael D. Milsom (1,2)

Heidelberg, Germany (2) Heidelberg Institute for Stem Cell Technology and Experimental Medicine gGmbH (HI-STEM), Heidelberg, Germany (3) German Cancer Research Center (DKFZ), Heidelberg, Germany (4) Heidelberg University, Heidelberg, Germany (5) Ruth L. and David S. Gottesman Institute for Stem Cell and Regenerative Medicine Research, Albert Einstein College of Medicine, Bronx, NY (6) Helmholtz Zentrum Muenchen-German Research Center for Environmental Health, Institute of Computational Biology, Neuherberg, Germany



## Pauline Latzer

**Medulloblastomas are highly invasive embryonal tumors, with an estimated 8000 new cases per year. One subtype, MB-SHH, is driven by an abnormal activation of the Sonic hedgehog (Shh) pathway in the cerebellum. Targeting Smoothed, a Shh co-receptor, has**

Pauline Latzer (1, 2), Tobias Kessler (1, 2), Felix Sahm (3, 4), Petra Rübmann (1, 2), Thomas Hielscher (5), Michael Platten (6, 7), Wolfgang Wick (1, 2)

(1) Universitätsklinikum Heidelberg, Neurologische Klinik, Heidelberg, Deutschland; (2) Klinische Kooperationseinheit Neuroonkologie, Deutsches Krebsforschungszentrum (DKFZ), Heidelberg, Deutschland; (3) Universitätsklinikum Heidelberg, Abteilung für Neuropathologie, Heidelberg, Deutschland; (4) Klinische Kooperationseinheit Neuropathologie, Deutsches Krebsforschungszentrum (DKFZ), Heidelberg, Deutschland; (5) Deutsches Krebsforschungszentrum (DKFZ), Abteilung Biostatistik, Heidelberg, Deutschland; (6) Universitätsklinik Mannheim, Neurologische Klinik, Mannheim, Deutschland; (7) Neuroimmunologie und Hirntumorimmunologie, Deutsches Krebsforschungszentrum (DKFZ), Heidelberg, Deutschland



Zhiqin Huang

**A pipeline to predict neoantigen as cancer vaccine across entities**

Huang, Zhiqin (1,2); Kosaloglu, Zeynep(1,2); Denisova, Evgeniya (4); Brors, Benedikt (4), Halama, Niels (2,3);Froehling, Stefan (5); Zoernig, Inka (2,3) and Jaeger, Dirk (1,2,3)

(1) Clinical Cooperation Unit "Applied Tumor Immunity", German Cancer Research Center (DKFZ), Heidelberg, Germany; (2) Department of Medical Oncology, National Center for Tumor Diseases (NCT), Heidelberg, Germany; (3) Heidelberg University Hospital, Heidelberg, Germany; (4) Division of Applied Bioinformatics, German Cancer Research Center (DKFZ), Heidelberg, Germany; (5) Division of Molecular and Cellular Oncology, German Cancer Research Center (DKFZ), Heidelberg, Germany

## Poster Presentations

## Poster Presentations Overview

### Poster session 1 - Monday, 15:00

Lena Kutscher

Nádia Correia

Natasha Anstee

Philipp Secker

Darja Karpova

Murat Iskar

Dominic Edelmann

Roman Schefzik

### Poster session 2 - Tuesday, 10:15

Yonghe Wu

Mike Fletcher

Hana Nuskova

David Schöndorf

Thomas Reich

Doris Schneller

Elisa Donato

Emanuel Bahn





**Lena Kutscher**

**Understanding the role of hereditary mutations in IKBKAP/ELP1 in pediatric medulloblastoma**

Lena M. Kutscher, Stefan M. Pfister, Daisuke Kawauchi

Division of Pediatric Neuro-oncology



## Nádia Correia

### **Identification of genetic, epigenetic and cellular events responsible for distinct clinical outcomes of DNMT3A mutant AMLs**

Nádia Correia (1), Simon Raffel (1), Corinna Klein (1,2), Michael A. Rieger (3,6), Hubert Serve (3,6), Lars Bullinger (4), Christian Thiede (5), Frank Buchholz (5) and Andreas Trumpp (1,2,6)

(1) Division of Stem Cells and Cancer, German Cancer Research Center (DKFZ), Heidelberg, Germany; (2) Institute for Stem Cell Technology and Experimental Medicine (HI-STEM), Heidelberg, Germany; (3) Department of Medicine, Hematology / Oncology, Goethe University Frankfurt, Germany; (4) Department of Internal transcriptome profiling Medicine III University Hospital of Ulm, Germany; (5) UniversitätsKrebs Centrum (UCC), Medical Systems Biology Medical Faculty Carl Gustav Carus, TU Dresden, Germany; (6) German Cancer Consortium, (DKTK)



**Natasha Anstee**

**Self-renewal of Hematopoietic Stem Cells**

Natasha S Anstee (1,2), Jude Al-Sabah (2,3), Julia Knoch (1,2), Julius Gräsel (1,2), Congxin Li (4), Thomas Höfer (4), Simon F Hass (2,3), Michael D Milsom (1,2)

(1) Division of Experimental Hematology, Deutsches Krebsforschungszentrum (DKFZ), Heidelberg; (2) Heidelberg Institute for Stem Cell Technology and Experimental Medicine (HI-STEM), Heidelberg; (3) Division of Stem Cells and Cancer, Deutsches Krebsforschungszentrum (DKFZ), Heidelberg; (4) Division of Theoretical Systems Biology, German Cancer Research Center (DKFZ), Heidelberg



**Philipp Secker**

**Investigating de novo NAD synthesis from tryptophan in glioblastoma cells**

Secker P.F. (1), Adam I. (1), Mooiweer J. (1), Mohapatra S.R. (1), Opitz C.A. (1,2)

(1) Brain Cancer Metabolism Group, German Cancer Research Center (DKFZ), Heidelberg, Germany; (2) Department of Neurology and National Center of Tumor Diseases, University Hospital Heidelberg, Heidelberg, Germany



## Darja Karpova

### Identification of novel targets in MRD in AML

Darja Karpova (1), Andreas Trumpp (1)

(1) Division of Stem Cells and Cancer, German Cancer Research Center (DKFZ) and DKFZ-ZMBH Alliance, Heidelberg, Germany



Murat Iskar

**The landscape of viral associations in human cancers**

Marc Zapatka (1\*), Ivan Borozan (2\*), Daniel S. Brewer (3,4,5\*), Murat Iskar (1\*), Adam Grundhoff (6), Malik Alawi (7), Nikita Desai (8,9), Colin S. Cooper (3,4), Roland Eils (10,11), Vincent Ferretti (12), Peter Lichter (1,13) on behalf of the PCAWG Pathogens Working Group, and the ICGC/TCGA Pan-Cancer Analysis of Whole Genomes Network.

(1) Division of Molecular Genetics, German Cancer Research Center (DKFZ), Heidelberg, Germany; (2) Informatics and Bio-computing Program, Ontario Institute for Cancer Research, Toronto, Ontario, Canada; (3) The Institute of Cancer Research, London, UK; (4) Norwich Medical School, University of East Anglia, Norwich, UK; (5) Earlham Institute, Norwich, UK; (6) Virus Genomics, Heinrich-Pette-Institute, Hamburg, Germany; (7) Bioinformatics Core, University Medical Center Hamburg-Eppendorf, Hamburg, Germany; (8) Division of Cancer Studies, King's College London, London, UK; (9) Cancer Systems Biology Laboratory, The Francis Crick Institute, London, UK; (10) Division of Theoretical Bioinformatics, German Cancer Research Center (DKFZ), Heidelberg, Germany; (11) Department of Bioinformatics and Functional Genomics, Institute of Pharmacy and Molecular Biotechnology, Heidelberg University and BioQuant Center, Heidelberg, Germany; (12) Ontario Institute for Cancer Research, MaRS Centre, Toronto, Canada; (13) German Cancer Consortium (DKTK), Heidelberg, Germany



## Dominic Edelmann

**Distance covariance based tests for detecting general associations in molecular data**

Dominic Edelmann

DKFZ



## Roman Schefzik

**Using the L2 Wasserstein distance to identify differential distributions in single-cell RNA sequencing data**

Roman Schefzik

Division of Somatic Evolution and Early Detection, German Cancer Research Center (DKFZ)





Yonghe Wu

**SOX10 ablation leads to a Proneural to Mesenchymal (PN-MES) switch and an invasiveness phenotype in glioblastoma**

Yonghe Wu (1), Ka-Hou Man (1), Mike Fletcher (1), Magdalena Schlotter (1), Barbara Costa (2), Jasmin Mangei (1), Peter Lichter (1) and Bernhard Radlwimmer (1)

(1) Division of Molecular Genetics, German Cancer Research Center (DKFZ), Im Neuenheimer Feld 280, Heidelberg 69120, Germany; (2) Division of Signal Transduction and Growth Control, DKFZ/ZMBH Alliance, Im Neuenheimer Feld 280, 69120, Heidelberg, Germany



Mike Fletcher

**An integrative epigenomic analysis identifies SOX10 as a glioblastoma master regulator**

M. Fletcher (1, †), Y. Wu (1, 2, †), Z. Gu (3, †), Q. Wang (4), A. Bertoni (1), C. Herrmann (4, 5), P. Lichter (1, 2), B. Radlwimmer (1)

(1) German Cancer Research Center (DKFZ), Molecular Genetics, Heidelberg, Germany; (2) DKFZ- HIPO - Heidelberg Center for Personalized Oncology, Heidelberg, Germany; (3) German Cancer Research Center (DKFZ), Applied Bioinformatics, Heidelberg, Germany; (4) German Cancer Research Center (DKFZ), Theoretical Bioinformatics, Heidelberg, Germany; (5) University Clinics Heidelberg, Biomedical Genomics Group, Health Science Data Unit, Heidelberg, Germany; †These authors contributed equally.



## Hana Nuskova

### **Stearoylation vs. palmitoylation of GNAI proteins: regulation of their localization and function**

Hana Nuskova, Aurelio A. Teleman

Division of Signal Transduction in Cancer and Metabolism, DKFZ



Thomas Reich

**Junb in inflammation-associated colorectal cancer**

Thomas R. Reich, Sören Strohmenger, Peter Angel, Marina Schorpp-Kistner

Division of Signal Transduction and Growth Control, German Cancer Research Center



**Doris Schneller**

**Function of the Receptor for Advanced Glycation End Products (RAGE) in Inflammation-associated Liver Carcinogenesis**

Wai-Ling Macrina Lam (1), Doris Schneller (1), Peter Angel (1)

(1) Division of Signal Transduction and Growth Control, German Cancer Research Center (DKFZ), Heidelberg, Germany



**Elisa Donato**

**Mechanistic investigation of epigenetic modifications induced by metabolic changes in AML**

Elisa Donato (1), Simon Raffel (1), Mattia Falcone (1), Carl Herrmann (2), Andreas Trumpp (1)

(1) DKFZ, Division of Stem Cells and Cancer, Heidelberg, Germany; (2) DKFZ, Cancer Regulatory Genomics, Heidelberg, Germany



## Emanuel Bahn

### **Enhanced Resilience of Intestinal Stem Cell Niche Following Millimeter-Scale Radiation Injury**

E. Bahn (1), M. van Heerden (2), J. Gueulette (3), K. Slabbert (4), W. Shaw (2), M. Alber (1)

(1) Department of Radiation Oncology, Universitätsklinikum Heidelberg; (2) Department of Medical Physics, University of the Free State, Bloemfontein, South Africa; (3) Université Catholique de Louvain, Belgium; (4) iThemba LABS, Somerset West, South Africa



**Gianna Triller**

Somatic Diversification in Immunity (D150), DKFZ, Heidelberg



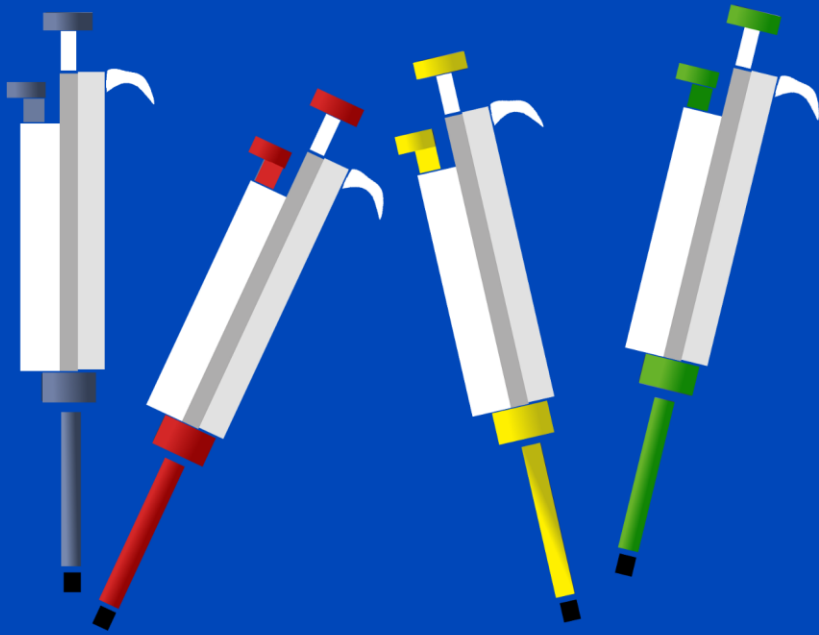
## List of participants

First Name	Last Name	Email
Natasha	Anstee	n.anstee@dkfz.de
Emanuel	Bahn	e.bahn@dkfz-heidelberg.de
Ruzhica	Bogeska	r.bogeska@dkfz.de
Simona	Capponi	s.capponi@dkfz-heidelberg.de
Nádia	Correia	n.correia@dkfz.de
Elisa	Donato	e.donato@dkfz.de
Dominic	Edelmann	dominic.edelmann@dkfz.de
Mike	Fletcher	m.fletcher@dkfz-heidelberg.de
Zhiqin	Huang	z.huang@dkfz.de
Jacob	Insua-Rodríguez	j.insuarodriguez@dkfz.de
Murat	Iskar	m.iskar@dkfz-heidelberg.de
Darja	Karpova	d.karpova@dkfz-heidelberg.de
Lena	Kutscher	l.kutscher@kitz-heidelberg.de
Pauline	Latzer	p.latzer@dkfz.de
Carine	Legrand	c.legrand@dkfz.de
Hana	Nuskova	h.nuskova@dkfz-heidelberg.de
Christos	Patsis	c.patsis@dkfz-heidelberg.de
Brandan	Pedre	b.pedreperez@dkfz-heidelberg.de
Thomas	Reich	t.reich@dkfz.de
Angela	Riedel-Lichorowicz	a.riedel@dkfz-heidelberg.de
Manuel	Rodríguez-Paredes	m.rodriquez@dkfz.de
Alicia	Roig Merino	a.roig@dkfz.de
Roman	Schefzik	r.schefzik@dkfz.de

## DKFZ PostDoc Retreat 2018

<b>First Name</b>	<b>Last Name</b>	<b>Email</b>
Doris	Schneller	d.schneller@dkfz.de
David	Schöndorf	schoendorf@bio.mx
Philipp	Secker	p.secker@dkfz.de
Gianna	Triller	g.triller@dkfz-heidelberg.de
Yonghe	Wu	yonghe.wu@dkfz.de

Notes



**dkfz.**

DEUTSCHES  
KREBSFORSCHUNGSZENTRUM  
IN DER HELMHOLTZ-GEMEINSCHAFT

.....  
Forschen für ein Leben ohne Krebs

# ***JOIN THE PDN!***

## **The DKFZ PostDoc Network...**

represents PostDocs at the DKFZ,  
NCT and DKTK

organises scientific and social events  
for PostDocs

supports PostDoc Career development.

**The committee needs YOU!**  
**Want to make PostDoc lives better?**  
**Join us today.**

**Contact us:**

**[www.dkfz.de/pdn](http://www.dkfz.de/pdn)**

**[pdn-committee@dkfz.de](mailto:pdn-committee@dkfz.de)**